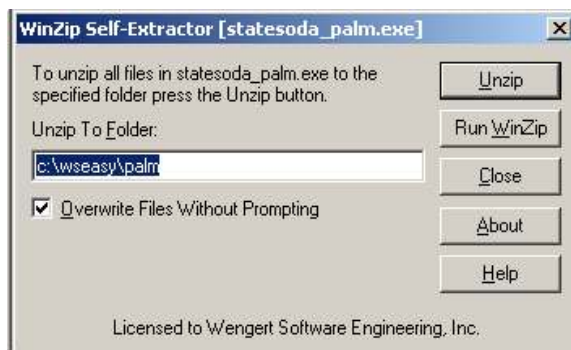


## WSEasy Installation Instructions for a Palm Zire 71

This document describes the steps necessary to install a revised WSEasy program on a Palm Zire 71 Palm Pilot Device. Before updating the Palm program, always upload all transactions to the host computer by performing a normal start of day or end of day communication function.

### Obtaining a new program from your product support page

- 1) Use your web browser to load your support page at <http://www.wengert.com/yourpage.htm> where “yourpage” refers to the name of the support page for your company, such as statesoda or respondwy.
- 2) Right click on the link to the updated palm program and choose the option to save it to disk. Make certain to pay attention to where your browser is saving the file because you will need to find it for the next step.
- 3) After the file is downloaded, use the Windows Explorer to find it and then run it by double-clicking it with the left mouse button. You will then see a screen similar to that shown below.



- 4) Press the unzip button. This will extract the new file (WSEasy.PRC) to the folder shown in the “Unzip to Folder” line on the dialog.

### Placing the new file onto your Palm Pilot(s)

#### *Direct Method using SD/MMC Card Reader on your PC*

If you have an expansion card reader on your PC, you can copy the new WSEasy program file (WSEasy.PRC) directly to the memory cards installed in your Palm Pilots.

- 1) Press the home button on your Palm Pilot to exit the WSEasy application.
- 2) Turn off the power and remove the flash card from the Palm Pilot’s expansion memory card slot.
- 3) Place the memory card into your card reader that is installed on your PC’s parallel or USB port.
- 4) Use the Windows Explorer to copy the file WSEasy.PRC to the \PALM\Launcher folder of the card. The card will typically appear as removable disk E: or F: depending upon how many disk drive type devices you have installed on your computer. When asked whether to overwrite the old file with the new one, choose yes. **THE NEW WSEASY.PRC FILE MUST BE PLACED INTO THE PALM\LAUNCHER FOLDER!**
- 5) Place the card back into your Palm and turn on the power.
- 6) You can now re-start the WSEasy application by tapping it once from the “Home” screen displayed on the Palm. Make sure the upper right hand corner of the home screen shows “Card” which means the Palm is listing the applications currently found on the expansion memory card. This is why the WSEasy.PRC program file must be placed in the PALM\Launcher folder.
- 7) Use the “Options” - “About WSEasy” menu item to check the new version number and date to make sure you are running the new program.

### ***Indirect Method using Upload/Download via Cable or MODEM***

This method copies the new WSEasy program file (WSEasy.PRC) to the Palms via the normal upload/download end of day process either via MODEM or direct cable connect.

- 1) After extracting the WSEasy.PRC file, copy this file to each route driver's folder. These folders are sub-folders of the WSEasy folder on your WSEasy server PC. They will have names that represent the drivers' ID numbers like 00000001, 00000002, etc. Make sure each driver gets a copy of the WSEasy.PRC file in his folder.
- 2) Perform the normal end of day procedure to connect the Palm.
- 3) Assuming there were no communications errors, the new program will have been downloaded to the Palm and placed onto the expansion memory card into the PALM\Launcher folder.
- 4) Press the home button on your Palm to exit the WSEasy application.
- 5) You can now re-start the WSEasy application by tapping it once from the "Home" screen displayed on the Palm.
- 11) Use the "Options" - "About WSEasy" menu item to check the new version number and date to make sure you are running the new program.