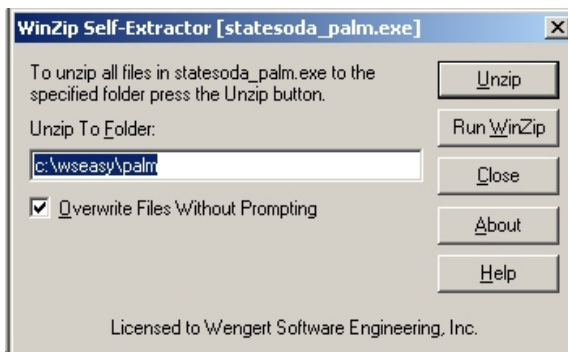


WSEasy Installation Instructions for TRGPro Palm Pilot

This document describes the steps necessary to install a revised WSEasy program on a TRGPro Palm Pilot Device. Before updating the Palm program, always upload all transactions to the host computer by performing a normal start of day or end of day communication function.

Obtaining a new program from your product support page

- 1) Use your web browser to load your support page at <http://www.wengert.com/yourpage.htm> where “yourpage” refers to the name of the support page for your company, such as statesoda or respondwy.
- 2) Right click on the link to the updated palm program and choose the option to save it to disk. Make certain to pay attention to where your browser is saving the file because you will need to find it for the next step.
- 3) After the file is downloaded, use the Windows Explorer to find it and then run it by double-clicking it with the left mouse button. You will then see a screen similar to that shown below.



- 4) Press the unzip button. This will extract the new file (WSEasy.PRC) to the folder shown in the “Unzip to Folder” line on the dialog.

Placing the new file onto your Palm Pilot(s)

Direct Method using Compact Flash Card Reader on your PC

If you have a flash card reader on your PC, you can copy the new WSEasy program file (WSEasy.PRC) directly to the flash cards installed in your Palm Pilots.

- 1) Press the home button on your TRGPro to exit the WSEasy application.
- 2) Turn off the power and remove the flash card from the top of the TRGPro.
- 3) Place the flash card into your flash card reader that is installed on your PC’s parallel or USB port.
- 4) Use the Windows Explorer to copy the file WSEasy.PRC to the root directory of the flash card. The flash card will typically appear as removable disk E: or F: depending upon how many disk drive type devices you have installed on your computer. When asked whether to overwrite the old file with the new one, choose yes.
- 5) Place the flash card back into your TRGPro and turn on the power.
- 6) Find the CFPro utility program and run it by tapping it once with your stylus.
- 7) When the program starts, move to the flash card by pressing the CF button at the bottom of the screen.
- 8) Scroll down through the files displayed until you find the program WSEasy.PRC, typically at or near the bottom of the list.
- 9) Select WSEasy.PRC by tapping it once then press the copy button. When prompted for confirmation, press OK.
- 10) The program will then ask you to confirm that you wish to replace the old version with the new one. Review the prompt to make sure the new file is more recent than the old one and then press the Yes button.

11) Exit the utility by pressing the home button. You can now re-start the WSEasy application by tapping it once from the “Home” screen displayed on the TRGPro.

12) Use the “Options” - “About WSEasy” menu item to check the new version number and date to make sure you are running the new program.

Indirect Method using Upload/Download via Cable or MODEM

This method copies the new WSEasy program file (WSEasy.PRC) to the Palms via the normal upload/download end of day process either via MODEM or direct cable connect.

- 1) After extracting the WSEasy.PRC file, copy this file to each route driver’s folder. These folders are sub-folders of the WSEasy folder on your WSEasy server PC. They will have names that represent the drivers’ ID numbers like 00000001, 00000002, etc. Make sure each driver gets a copy of the WSEasy.PRC file in his folder.
- 2) Perform the normal end of day procedure to connect the Palm.
- 3) Assuming there were no communications errors, the new program will have been downloaded to the Palm and placed onto the compact flash card in the folder \RAMDRIVER\INCOMING.
- 4) Press the home button on your TRGPro to exit the WSEasy application.
- 5) Find the CFPro utility program and run it by tapping it once with your stylus.
- 6) When the program starts, move to the flash card by pressing the CF button at the bottom of the screen.
- 7) Double tap on the folder called RAMDRIVE to select it as the current working folder.
- 8) Next, double tap on the folder called INCOMING to select it as the current working folder.
- 9) Scroll down through the files displayed until you find the program WSEasy.PRC, typically at or near the bottom of the list.
- 10) Select WSEasy.PRC by tapping it once then press the copy button. When prompted for confirmation, press OK.
- 11) The program will then ask you to confirm that you wish to replace the old version with the new one. Review the prompt to make sure the new file is more recent than the old one and then press the Yes button.
- 12) The program has now been copied from the INCOMING folder to the RAM on the Palm Pilot.
- 13) Next, double tap the double-dot entry (i.e. ..) to move back to the RAMDRIVE folder.
- 14) Next, double tap the double-dot entry (i.e. ..) to move back to the \ (root) folder.
- 15) Tap the button at the bottom labeled RAM.
- 16) Scroll down through the files displayed until you find the program WSEasy.PRC, typically at or near the bottom of the list.
- 17) Select WSEasy.PRC by tapping it once then press the copy button. When prompted for confirmation, press OK.
- 18) You have now copied the new program from RAM to the root directory of the CF card. This will make it easier to find should you need to reload the program in the event your Palm was reset or lost its battery power.
- 19) Exit the utility by pressing the home button. You can now re-start the WSEasy application by tapping it once from the “Home” screen displayed on the TRGPro.
- 20) Use the “Options” - “About WSEasy” menu item to check the new version number and date to make sure you are running the new program.